

CARPET

SPECIFICATION DATA

WARRANTIES

Description:	Texture
Fiber Composition:	100% Solution Dyed Olefin
Pile Weight OZ/YD²:	20 oz / 26oz
Total Weight:	48.7 oz/yd ² / 54.6 oz/yd ²
Pile Density:	4800 / 5288
Tufted Gauge:	1/10"
Primary Backing:	Woven
Secondary Backing:	Action Back
Carpet Width:	12 ft
Pile Height:	0.157" / 0.177"
Total Height:	0.236" / 0.255"
Flammability:	Pill Test (CPSC FF1-70) Passed

Manufacturing Defects 10 Years

Colors:



649 Coffee Bean



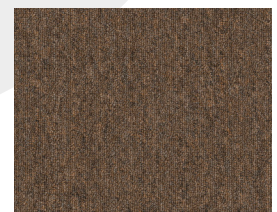
676 Greige



1429 Ocean



1430 Charcoal



1431 Earth



1439 Sand

NOTE: All specifications are subject to normal manufacturing tolerances